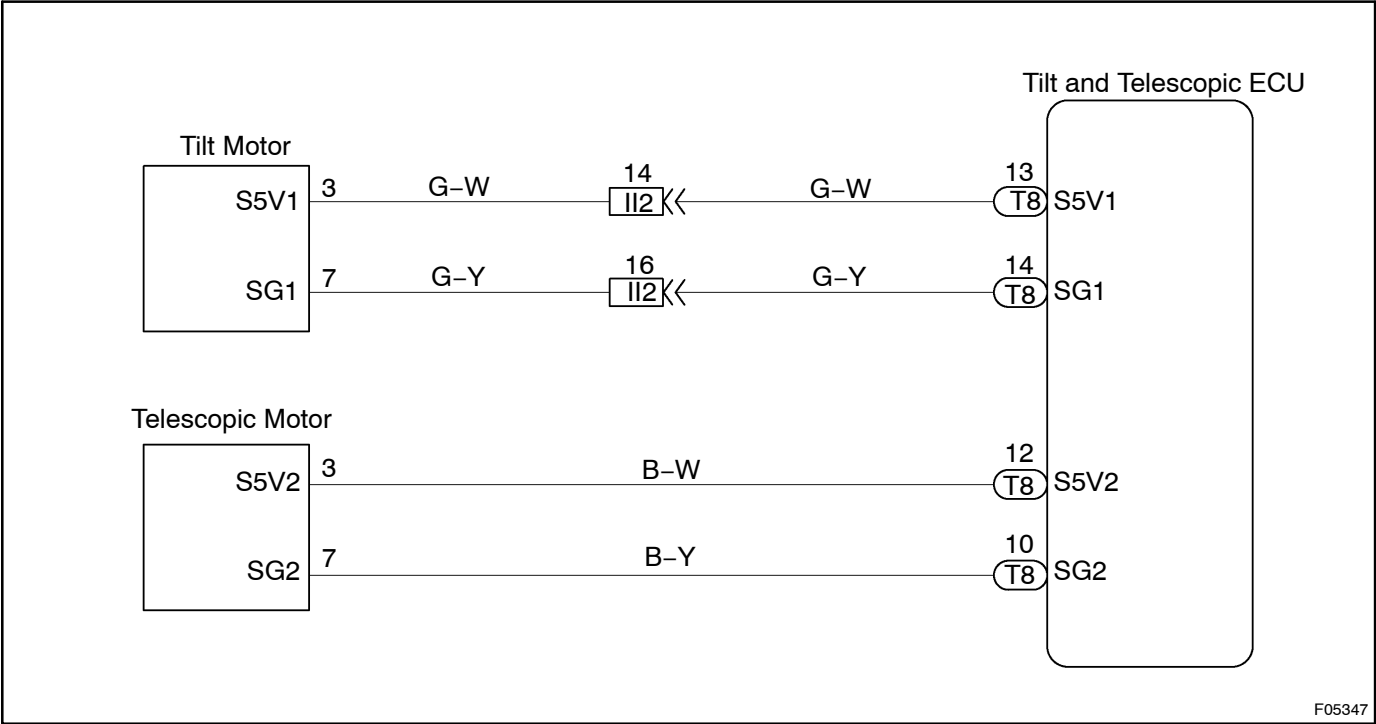


Sensor Power Source Circuit

CIRCUIT DESCRIPTION

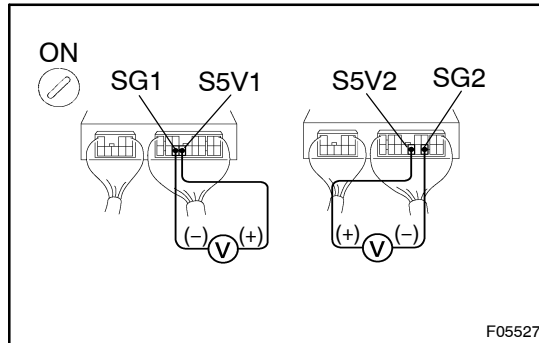
Power to the position sensor is output from ECU.

WIRING DIAGRAM



INSPECTION PROCEDURE

1	Check voltage between terminals S5V1 and SG1, S5V2 and SG2 of ECU connector.
---	--



PREPARATION:

Remove ECU with connectors still connected.

CHECK:

Measure voltage between terminals S5V1 and SG1, S5V2 and SG2 of ECU connector.

OK:

Voltage: 4.5 – 5.5 V

NG

Go to step 3.

OK

2	Check for open in harness and connector between terminals S5V1 and SG1, S5V2 and SG2 of ECU connector.
---	--

NG

Repair or replace harness or connector.

OK

Proceed to next circuit inspection shown on the problem symptom table.
(See page [DI-420](#))

3	Check for short in harness between terminals S5V1 and SG1, S5V2 and SG2 of ECU connector.
---	---

NG

Repair or replace harness or connector.

OK

Check and replace tilt and telescopic ECU.